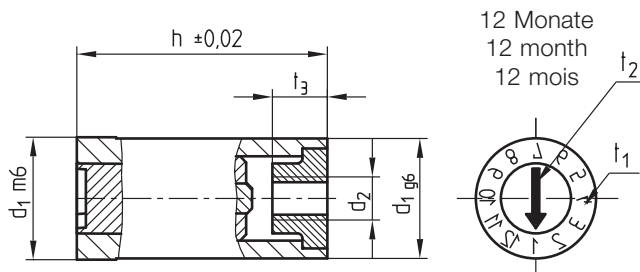
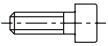


Z4861/4/...

Mat.: 1.2343/52 ± 2 HRC

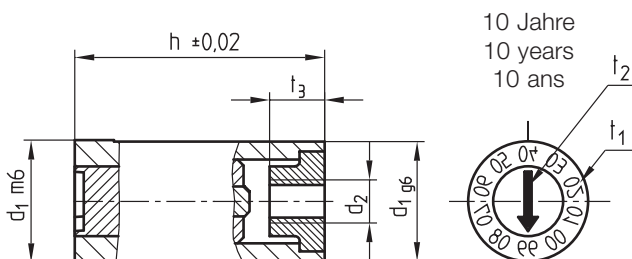


Neu / New / Nouveau

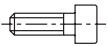
DIN 912	d ₂	t ₁	t ₂	t ₃	Typ	d ₁	h	Nr./No.	
	M2 x20	M2	0,3	0,7	4	4	12,5	Z4861/4/ 4x12,5	
	M2,5x20	M2,5		0,9		2,5	5	14	5x14
	M3 x20	M3				3	6	16	6x16
				5,5		8	18	8x18	
						10	22	10x22	
	M4 x20	M4				12	25	12x25	

Z4861/5/...

Mat.: 1.2343/52 ± 2 HRC



Neu / New / Nouveau

DIN 912	d ₂	t ₁	t ₂	t ₃	Typ	d ₁	h	Nr./No.	
	M2 x20	M2	0,3	0,7	5	4	12,5	Z4861/5/ 4x12,5	
	M2,5x20	M2,5		0,9		2,5	5	14	5x14
	M3 x20	M3				3	6	16	6x16
				5,5		8	18	8x18	
						10	22	10x22	
	M4 x20	M4				12	25	12x25	

This is trial version
www.adultpdf.com